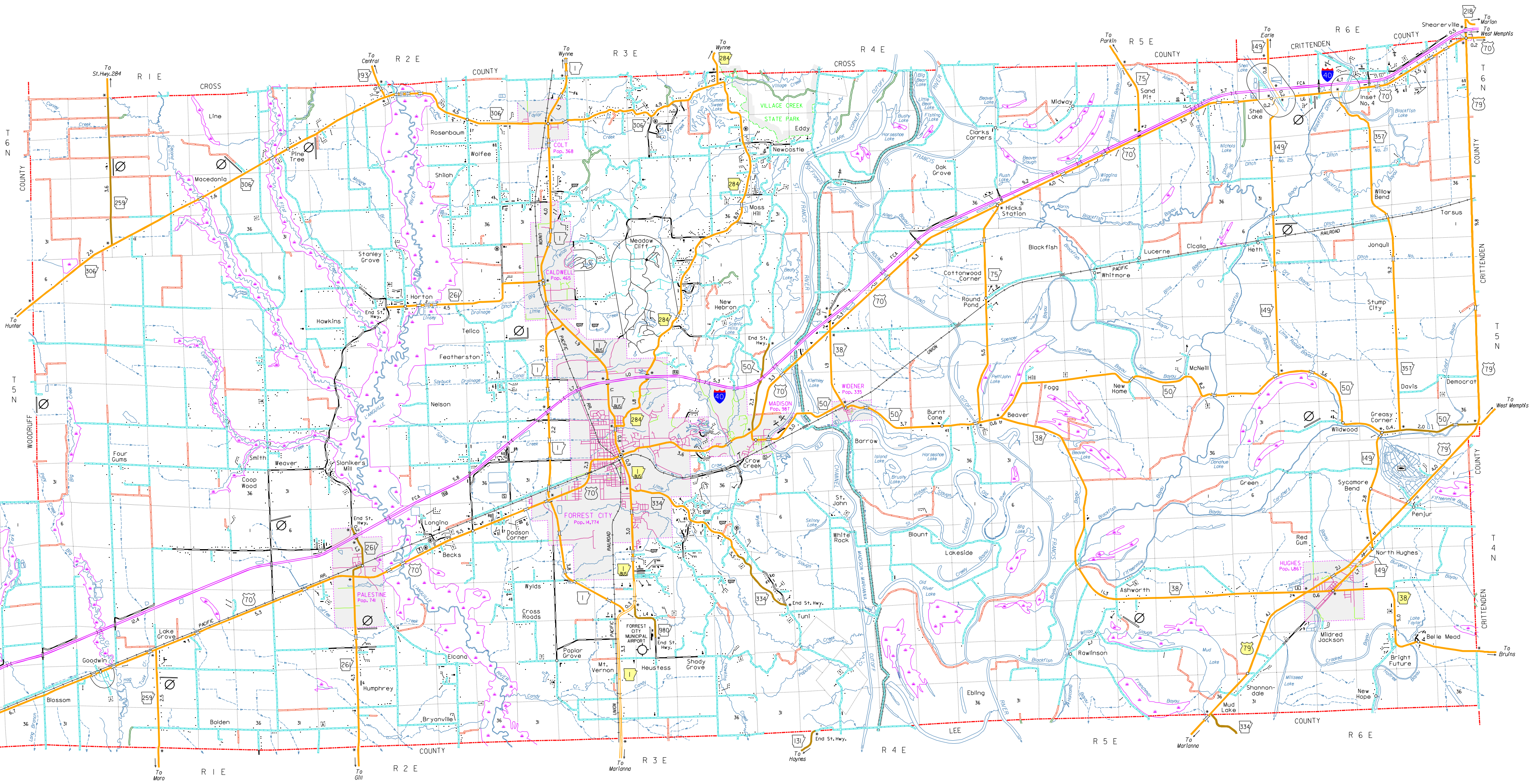


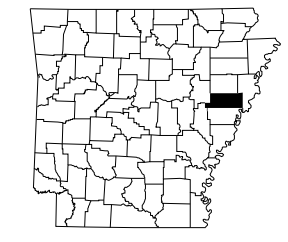
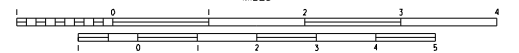
MEADOWS CLIFF
Sec. 33, 34, T 6 N, R 3 E
Sec. 2, 3, 4, 5, 10, 11, T 5 N, R 3 E
Scale: 3 times map scale



- LEGEND
- COUNTY BOUNDARY
 - U.S. LAND TOWNSHIP LINE
 - SECTION LINE
 - PARK OR RESERVATION BOUNDARY
 - PAVED STATE OR U.S. HIGHWAY
 - DIVIDED HIGHWAY
 - INTERSTATE HIGHWAY
 - U.S. NUMBERED HIGHWAY
 - STATE HIGHWAY
 - PAVED LOCAL ROAD
 - GRAVEL LOCAL ROAD
 - GRADED & DRAINED LOCAL ROAD
 - UNIMPROVED LOCAL ROAD
 - INTERCHANGE
 - RAILROAD
 - RAILROAD STATION
 - RAILROAD CROSSING
 - OVERPASS
 - UNDERPASS
 - HIGHWAY BRIDGE
 - LEVEE OR DIKE
 - LEVEE WITH ROAD
 - MILEAGE BETWEEN PONTS
 - LAKE, RESERVOIR OR POND
 - LAKE, RESERVOIR OR POND WITH DAM
 - MARSH OR SWAMP
 - WIDE RIVER OR STREAM
 - DOCK, PIER OR LANDING
 - SMALL STREAM
 - DRAINAGE DITCH
 - CORPORATE LIMITS AND ROADS THROUGH TOWN
 - COUNTY SEAT
 - OTHER CITIES AND TOWNS
 - MUNICIPAL AIRPORT
 - PRIVATE AIRFIELD
 - FARM UNIT OR DWELLING
 - GROUP OF CLOSELY SPACED DWELLINGS
 - CHURCH OR OTHER RELIGIOUS INSTITUTION
 - SCHOOL
 - POST OFFICE
 - POST OFFICE AND BUSINESS
 - CEMETERY
 - CHURCH WITH CEMETERY ADJACENT
 - BUSINESS ESTABLISHMENT
 - FACTORY OR INDUSTRIAL PLANT
 - GRAVEL PIT
 - QUARRY
 - POWER PLANT
 - AIRPORT, GARAGE OR COUNTY GARAGE
 - POWER SUBSTATION
 - TRAILER PARK
 - FISH HATCHERY
 - GOLF COURSE OR COUNTRY CLUB
 - ATHLETIC FIELD OR AMUSEMENT PARK
 - SMALL PARK
 - SEWAGE DISPOSAL PLANT
 - WATER SUPPLY STANDPIPE OR TANK
 - PICNIC GROUND
 - SCENIC HIGHWAY

GENERAL HIGHWAY MAP
ST. FRANCIS COUNTY
ARKANSAS

PREPARED BY
ARKANSAS STATE HIGHWAY AND TRANSPORTATION DEPARTMENT
PLANNING AND RESEARCH DIVISION
IN COOPERATION WITH
U.S. DEPARTMENT OF TRANSPORTATION
FEDERAL HIGHWAY ADMINISTRATION
SCALE 1:62,500
MILES
KILOMETERS



Copies of this map are available
at a nominal fee from the
Arkansas State Highway and
Transportation Department,
P.O. Box 226-Little Rock, Ark. 72203

NOTES: Enlargements of all congested areas are five times
map scale unless otherwise noted.
Individual maps are available for all active incorporated cities.
Area: 445.4 square miles.
Population: 24,929 - 2000 Census
Map issued 8-13-08, replaces map issued 4-29-86
Field Inventory 814
Map revisions made from aerial photographs taken 3-3-06
Map completion completed 0-6-07
County map produced using Computer Assisted Cartography.

