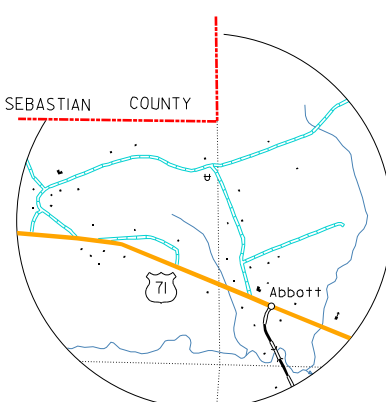
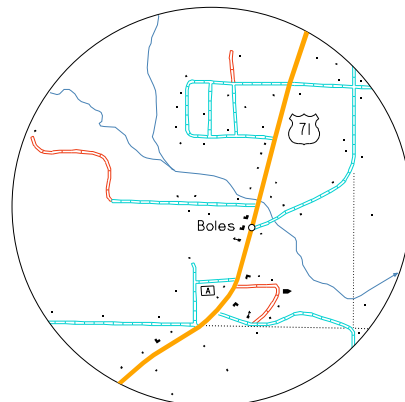


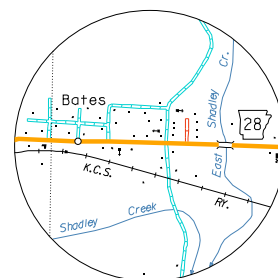
HON  
Sec. 3, 4, 5, 10, T 3 N, R 30 W



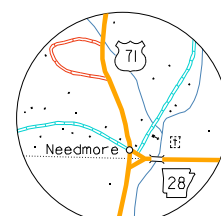
ABBOTT  
Sec. 27, 28, 33, 34, T 5 N, R 30 W



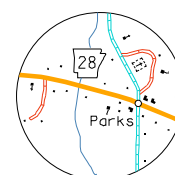
BOLES  
Sec. 35, 36, T 2 N, R 29 W



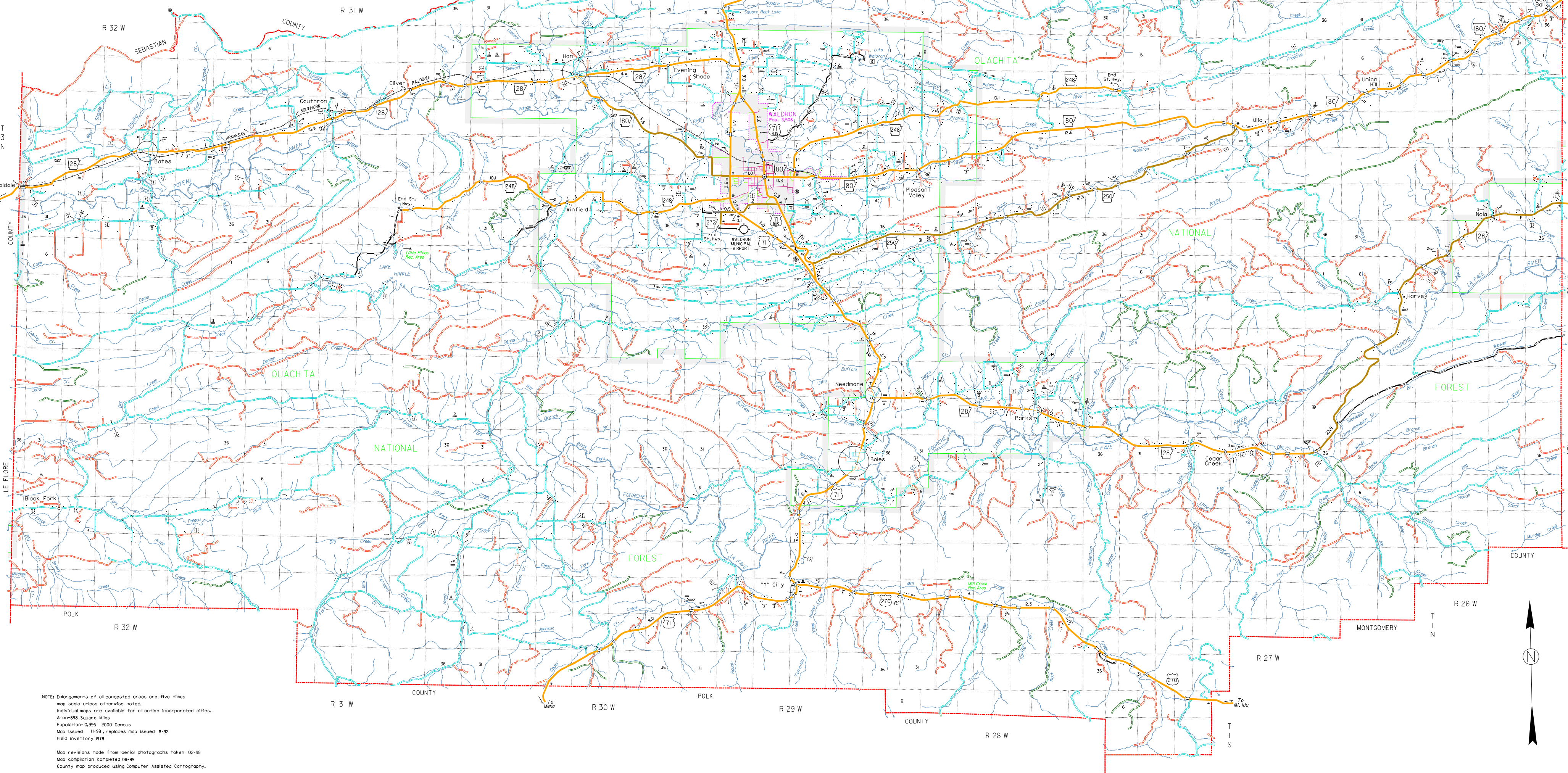
BATES  
Sec. 26, T 3 N, R 32 W



NEEDMORE  
Sec. 24, 25, T 2 N, R 29 W



PARKS  
Sec. 27, T 2 N, R 28 W



NOTES: Enlargements of all congested areas are five times  
map scale unless otherwise noted.  
Individual maps are available for all incorporated cities.  
Area: 898 Square Miles  
Population: 6,796, 2000 Census  
Map Issued: 11/78, replaces map issued 8-72  
Field Inventory 1978  
Map revisions made from aerial photographs taken 02-78  
Map compilation completed 08-99  
County map produced using Computer Assisted Cartography.

- LEGEND
- STATE BOUNDARY
  - COUNTY BOUNDARY
  - U.S. LAND TOWNSHIP LINE
  - SECTION LINE
  - NATIONAL FOREST BOUNDARY
  - PAVED STATE OR U.S. HIGHWAY
  - U.S. NUMBERED HIGHWAY
  - STATE HIGHWAY
  - PAVED LOCAL ROAD
  - GRAVEL LOCAL ROAD
  - GRAVEL & DRAINED LOCAL ROAD
  - UNIMPROVED LOCAL ROAD
  - RAILROAD TRACKS USED BY RAILROAD COMPANY
  - RAILROAD STATION
  - GRADE CROSSING
  - OVERPASS
  - UNDERPASS
  - HIGHWAY BRIDGE 100 FEET OR MORE IN LENGTH
  - PAVED FORD OR LOW WATER BRIDGE
  - MILEAGE BETWEEN POINTS
  - LAKE, RESERVOIR OR POND
  - LAKE, RESERVOIR OR POND WITH DAM
  - WIDE RIVER OR STREAM
  - DOCK, PIER OR LANDING
  - SMALL STREAM
  - DRAINAGE DITCH
  - CORPORATE LIMITS AND ROADS THROUGH TOWN
  - COUNTY SEAT
  - OTHER CITIES AND TOWNS
  - MUNICIPAL AIRPORT
  - FARM UNIT OR DWELLING
  - GROUP OF CLOSELY SPACED DWELLINGS 6, IF NO ROAD SHOWN
  - CHURCH OR OTHER RELIGIOUS INSTITUTION
  - SCHOOL
  - POST OFFICE + POST OFFICE AND BUSINESS
  - CEMETERY
  - CHURCH WITH CEMETERY ADJACENT
  - BUSINESS ESTABLISHMENT
  - FACTORY OR INDUSTRIAL PLANT
  - GRAVEL PIT
  - TOWN OR COMMUNITY HALL
  - AHL/D, GARAGE OR COUNTY GARAGE
  - POWER SUBSTATION
  - HISTORICAL MONUMENT
  - OBSERVATION OR LOOKOUT TOWER
  - CAMP OR LODGE
  - SMALL FARM (UP-STATE OR COUNTY OF RESIDENCE, IF KNOWN)
  - WATER SUPPLY STANDPIPE OR TANK
  - SEWAGE DISPOSAL PLANT
  - CHICKEN HOUSE OR OTHER LIVESTOCK

GENERAL HIGHWAY MAP  
**SCOTT COUNTY**  
ARKANSAS

PREPARED BY  
ARKANSAS STATE HIGHWAY AND TRANSPORTATION DEPARTMENT  
PLANNING AND RESEARCH DIVISION  
IN COOPERATION WITH  
U.S. DEPARTMENT OF TRANSPORTATION  
FEDERAL HIGHWAY ADMINISTRATION  
SCALE 1:62,500  
MILES  
KILOMETERS

Copies of this map are available  
at a nominal fee from the  
Arkansas State Highway and  
Transportation Department,  
P.O. Box 226-Little Rock, Ark. 72203