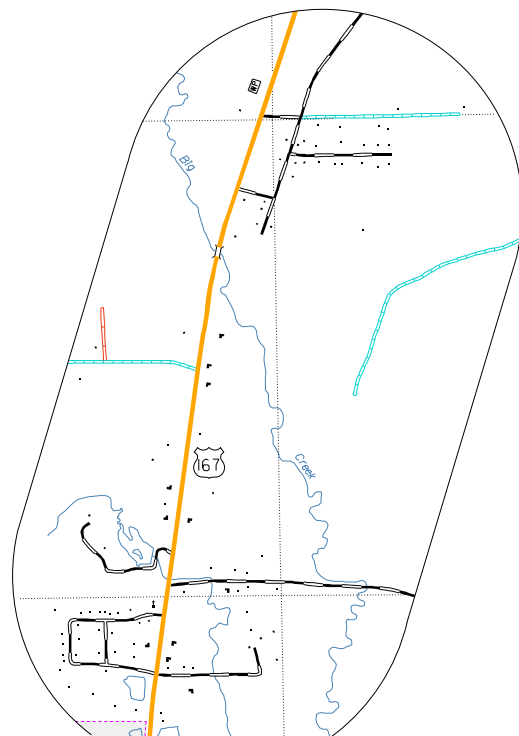
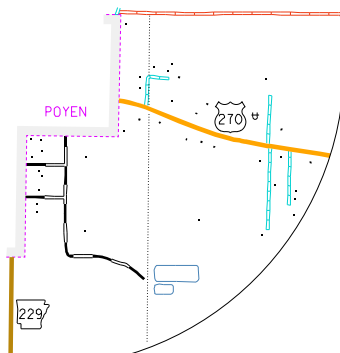


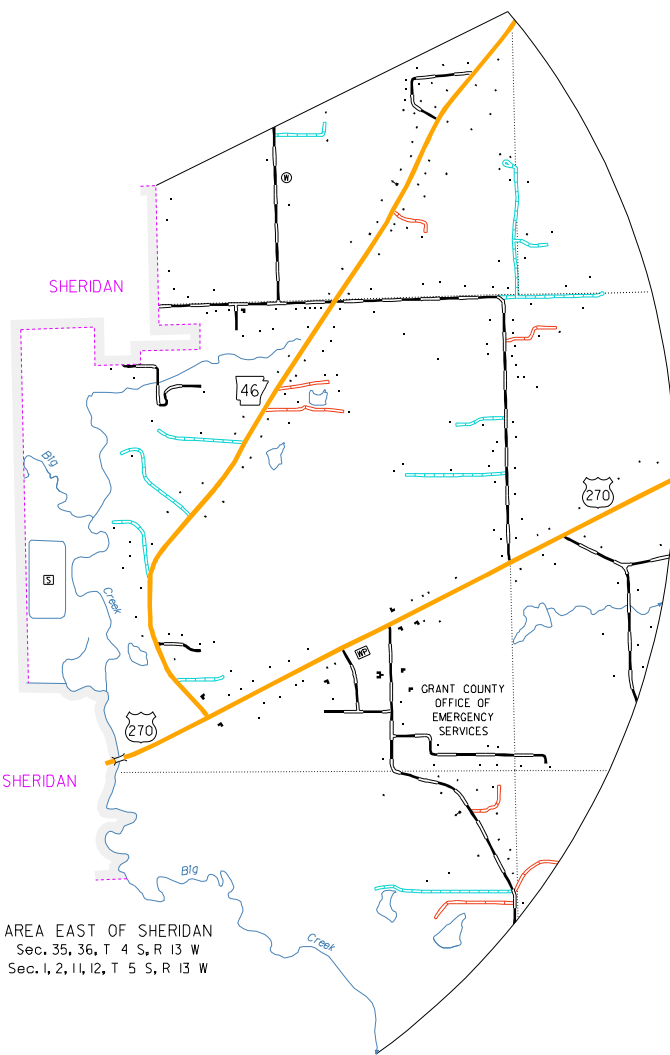
AREA SOUTH OF PRATTSVILLE
Sec. 7, 15 S, R 14 W
Sec. 12, 15 S, R 15 W



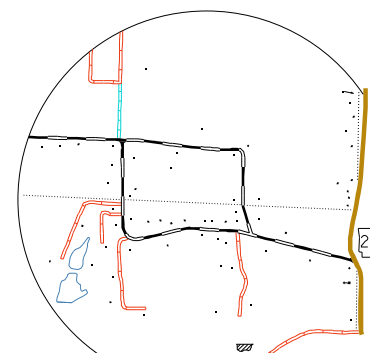
INSET NO. 2
Sec. 22, 23, 26, 27, 34, 35, 14 S, R 13 W



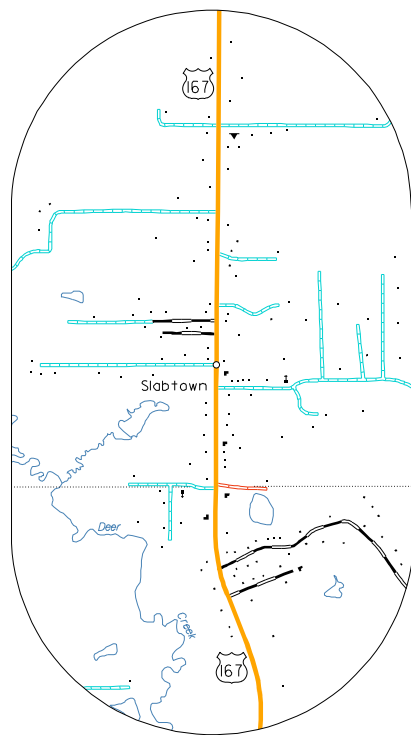
AREA EAST OF POYEN
Sec. 4, 5, 15 S, R 15 W



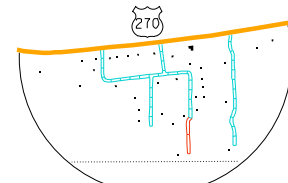
AREA EAST OF SHERIDAN
Sec. 35, 36, 14 S, R 13 W
Sec. 12, 14, 15 S, R 13 W



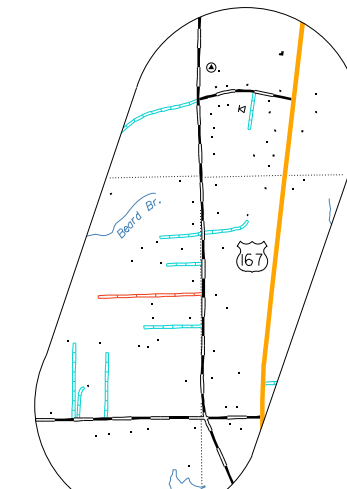
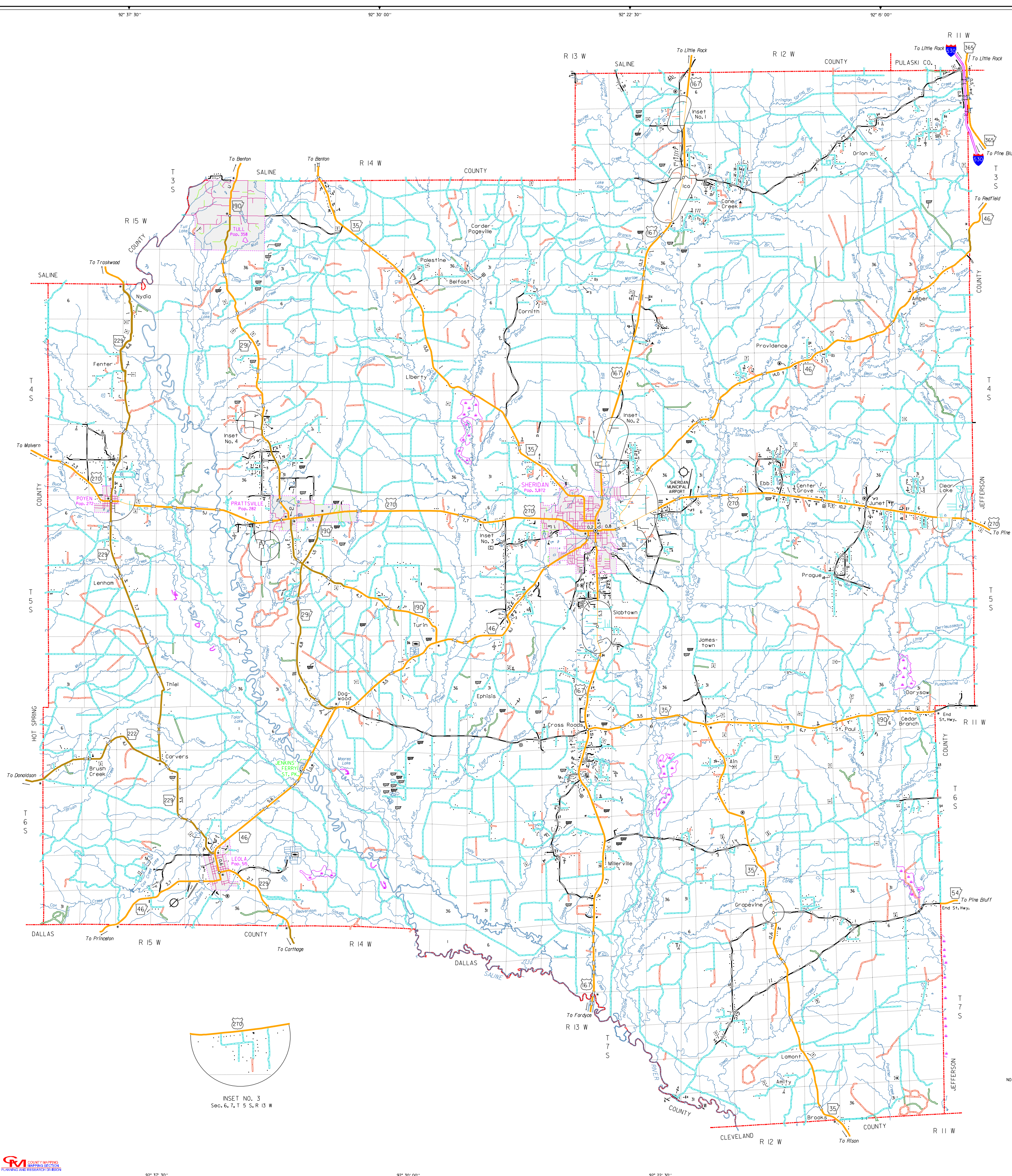
INSET NO. 4
Sec. 24, 25, 14 S, R 15 W



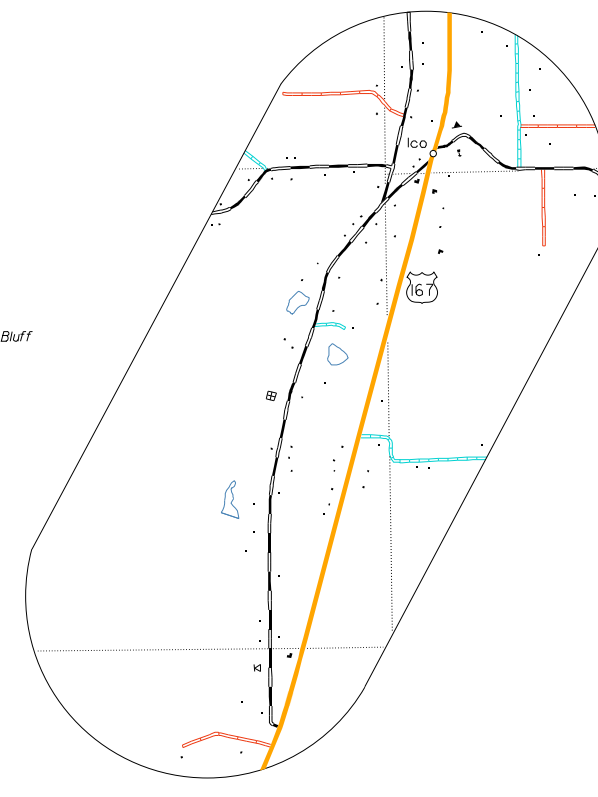
SLABTOWN
Sec. 22, 27, 15 S, R 13 W



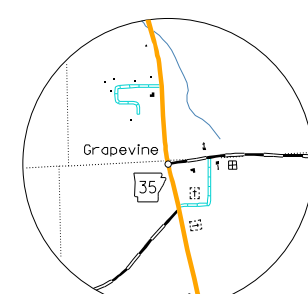
INSET NO. 3
Sec. 6, 7, 15 S, R 13 W



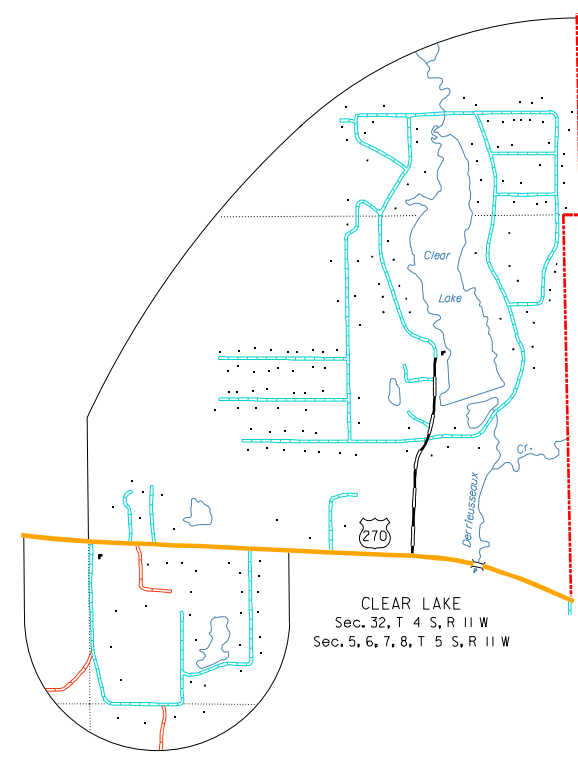
INSET NO. 1
Sec. 6, 7, 15 S, R 13 W
Sec. 1, 12, 13 S, R 13 W



ICO
Sec. 18, 19, 13 S, R 12 W
Sec. 13, 24, 25, 13 S, R 13 W



GRAPEVINE
Sec. 13, 14, 15 S, R 12 W
Sec. 3, 4, 7, 15 S, R 12 W



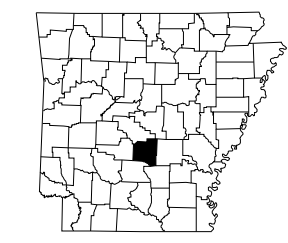
CLEAR LAKE
Sec. 32, 14 S, R 11 W
Sec. 5, 6, 7, 8, 15 S, R 11 W

GENERAL HIGHWAY MAP GRANT COUNTY ARKANSAS

PREPARED BY
ARKANSAS STATE HIGHWAY AND TRANSPORTATION DEPARTMENT
PLANNING AND RESEARCH DIVISION
IN COOPERATION WITH
U.S. DEPARTMENT OF TRANSPORTATION
FEDERAL HIGHWAY ADMINISTRATION
SCALE 1:62,500
MILES
KILOMETERS



Copies of this map are available
at a nominal fee from the
Arkansas State Highway and
Transportation Department,
P.O. Box 226-Little Rock, Ark. 72203



NOTES: Enlargements of all congested areas are five times
map scale unless otherwise noted.
Individual maps are available for all active incorporated cities.
Area-635 square miles.
Population-6,464 2000 Census
Map issued 12-05-07, replaces map issued 11-29-97
Field inventory 8/05
Map revisions made from aerial photographs taken January, 2008
Map completion completed 6-02-07
County map produced using Computer Assisted Cartography.

Polyconic Projection-North American Datum