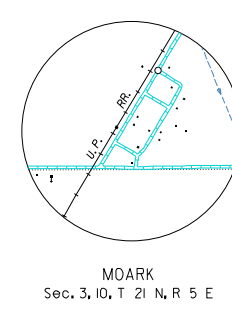
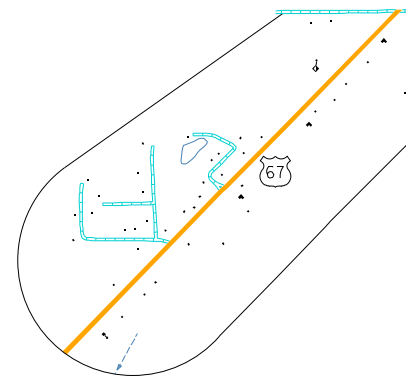


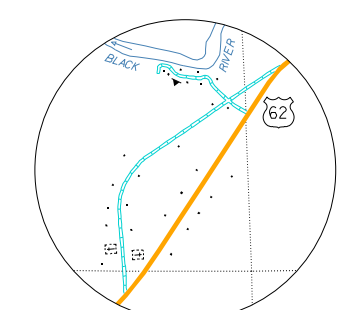
- LEGEND
- STATE BOUNDARY
  - COUNTY BOUNDARY
  - U.S. LAND TOWNSHIP LINE
  - SECTION LINE
  - NATIONAL FOREST BOUNDARY
  - PARK OR RESERVATION BOUNDARY
  - PAVED STATE OR U.S. HIGHWAY
  - U.S. NUMBERED HIGHWAY
  - STATE HIGHWAY
  - PAVED LOCAL ROAD
  - GRAVEL LOCAL ROAD
  - GRADED & DRAINED LOCAL ROAD
  - UNIMPROVED LOCAL ROAD
  - RAILROAD (RAILROAD STATION AND CROSSING)
  - RAILROAD STATION
  - RAILROAD CROSSING
  - HIGHWAY BRIDGE (100 FEET OR MORE IN LENGTH)
  - PAVED FORD OR LOW WATER BRIDGE
  - LEVEE OR DIKE
  - LEVEE WITH ROAD
  - MEILEGE BETWEEN POINTS
  - LAKE, RESERVOIR OR POND
  - LAKE, RESERVOIR OR POND WITH DAM
  - MARSH OR SWAMP
  - WIDE RIVER OR STREAM
  - DOCK, PIER OR LANDING
  - INTERMITTENT NAVIGATION
  - SMALL STREAM
  - DRAINAGE DITCH
  - CORPORATE LIMITS AND ROADS THROUGH TOWN
  - COUNTY SEAT
  - OTHER CITIES AND TOWNS
  - MUNICIPAL AIRPORT
  - PRIVATE AIRFIELD
  - FARM UNIT OR DWELLING
  - GROUP OF CLOSELY SPACED DWELLINGS (IF NO FIGURE SHOWN)
  - CHURCH OR OTHER RELIGIOUS INSTITUTION
  - SCHOOL
  - POST OFFICE & POST OFFICE AND BUSINESS
  - CEMETERY
  - CHURCH WITH CEMETERY ADJACENT
  - BUSINESS ESTABLISHMENT
  - FACTORY OR INDUSTRIAL PLANT-COTTON GIN
  - GRAVEL PIT
  - QUARRY
  - TOWN OR COMMUNITY HALL
  - ROAD OR TELEVISION STATION AND CALL LETTERS
  - WEIGHT AND PERMIT STATION
  - Gauging or Pumping Station
  - POWER SUBSTATION
  - GRAIN ELEVATOR
  - TRAILER PARK
  - FISH HATCHERY
  - CAMP OR LODGE
  - GOLF COURSE OR COUNTRY CLUB
  - SMALL FARM (OPTIONAL: COUNTRY CLUB, GOLF COURSE, RAILROAD, AIRPORT, MEAT)
  - WATER SUPPLY STANDPIPE OR TANK
  - SEWAGE DISPOSAL PLANT
  - AUTO SALVAGE YARD
  - CHICKEN HOUSE OR OTHER LIVESTOCK
  - ARKANSAS WELCOME CENTER
  - SCENIC HIGHWAY



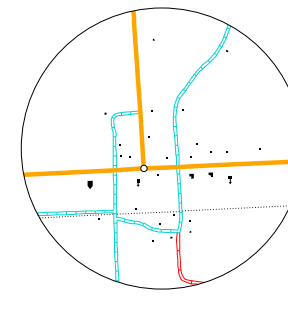
MARK  
Sec. 3, 10, T. 21 N, R. 5 E



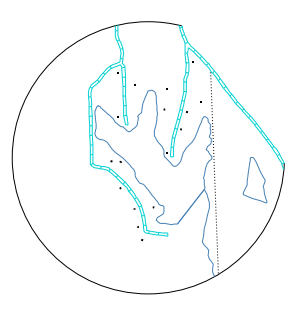
INSET NO. 2  
Sec. 6, T. 20 N, R. 5 E



CANTWELL  
Sec. 35, 36, T. 21 N, R. 5 E  
Sec. 1, 2, T. 20 N, R. 5 E

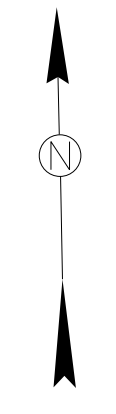


BOYDSVILLE  
Sec. 25, 36, T. 20 N, R. 6 E



INSET NO. 1  
Sec. 13, T. 20 N, R. 6 E  
Sec. 16, T. 20 N, R. 7 E

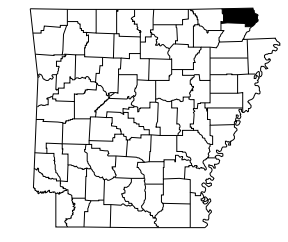
NOTES: Enlargements of all congested areas are five times map scale unless otherwise noted.  
Individual maps are available for all active incorporated cities.  
Area: 645 Square Miles  
Population: 17,609 2000 Census  
Map Issued 6-08-07, replaces map issued 1-15-97  
Field Inventory 978  
Map revisions made from aerial photographs taken 3-15-06  
Map completion completed 4-1-07  
County map produced using Computer Assisted Cartography  
Map Revised 02-11-2005, deleted a portion of S.R. 980, Section 6, 130



# GENERAL HIGHWAY MAP CLAY COUNTY ARKANSAS

PREPARED BY  
ARKANSAS STATE HIGHWAY AND TRANSPORTATION DEPARTMENT  
PLANNING AND RESEARCH DIVISION  
IN COOPERATION WITH  
U.S. DEPARTMENT OF TRANSPORTATION  
FEDERAL HIGHWAY ADMINISTRATION  
SCALE 1:62,500  
MILES  
KILOMETERS

Copies of this map are available  
at a nominal fee from the  
Arkansas State Highway and  
Transportation Department,  
P.O. Box 226-Little Rock, Ark. 72203



Polyconic Projection-North American Datum